

Bringing Singapore to the World and the World to Singapore

4 October 2023

10.15am – 2pm	Node 1 Opening & Panel 79 Science Park Drive, Cintech IV, #04-05, Singapore 118264 Guest-of-Honor: Mr Heng Swee Keat Singapore Deputy Prime Minister and Coordinating Minister for Economic Policies
10.15am	Registration and Networking
11am	Welcome address by Khoo Shih, CEO, ClavystBio Opening Remarks by DPM Heng Swee Keat Panel: Translating Breakthroughs into Patient Impact Amy Schulman, Managing Partner, Polaris Partners Beh Kian Teik, CEO, National Research Foundation Khoo Shih, CEO, ClavystBio Moderated by Selina Koch, Executive Editor, BioCentury
1pm	Lunch
3.30pm – 7pm	Keynote Panel & Cocktail Reception 2 Science Park Drive, Arena @ Bridge+, Singapore 118222
3.30pm	Registration
4pm	Welcome Address by Khoo Shih, CEO, ClavystBio Opening Remarks by Dilhan Pillay, CEO, Temasek Keynote Panel: Singapore as the Next Life Science Hub – Are We Ready? Amy Abernethy, President, Product Development & CMO, Verily Robert Langer, Institute Professor, MIT Terry McGuire, Founding Partner, Polaris Partners Moderated by Fidah Alsagoff, Chairman, ClavystBio and Joint Head of Enterprise Development Group (Singapore) & Head of Life Sciences, Temasek
5.30pm	Cocktail Reception

Event Details:

Node 1 Opening & Panel (10am - 2pm)

Venue: 79 Science Park Drive, Cintech IV, #04-05, Singapore 118264

Keynote Panel & Cocktail Reception (3.30pm - 7pm)

Venue: 2 Science Park Drive, Ascent, Arena @ Bridge+, Singapore 118222

For guests attending the Keynote Panel and Cocktail Reception in the afternoon, shuttle buses will be running between Cintech IV and Ascent from 1pm to 4pm.

Dress Code: Business Casual (Jacket no tie for gentlemen)

Getting there: Parking spaces are limited at Cintech IV and Arena @ Bridge+. We strongly recommend arriving by public transport or taxi.

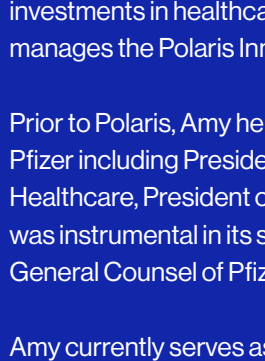


Node 1 Opening Panel: Translating Breakthroughs into Patient Impact

What have we learned and how do we scale?

Singapore is seeing early successes of commercialization of scientific breakthroughs, with a growing ecosystem of inventors, global investors and biotechs today. What have we learned and how can we continue to evolve our model?

Panelists:

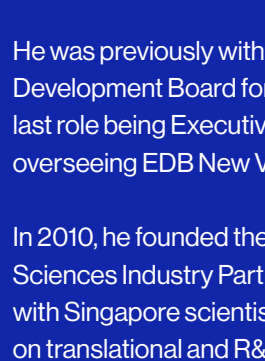


AMY SCHULMAN
Managing Partner
Polaris Partners

Amy Schulman is a Managing Partner in Polaris Partners' New York office and focuses on investments in healthcare companies. She also manages the Polaris Innovation Fund.

Prior to Polaris, Amy held various roles at Pfizer including President of Pfizer Consumer Healthcare, President of Pfizer Nutrition where she was instrumental in its sale to Nestle in 2012, and General Counsel of Pfizer.

Amy currently serves as an independent director on ClavystBio's board. She is also Executive Chair of SQZ Biotech, and a director on the boards of Alnylam Pharmaceuticals and Mount Sinai Hospital in New York City.



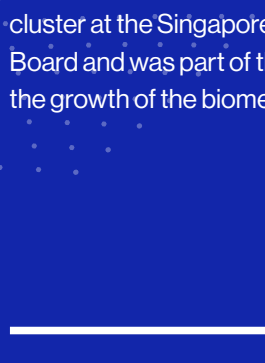
BEH KIAN TEIK
Chief Executive Officer
National Research Foundation

Beh Kian Teik oversees the national RIE strategies and governance frameworks.

He was previously with the Economic Development Board for over 22 years, with his last role being Executive Vice President and overseeing EDB New Ventures.

In 2010, he founded the Singapore Biomedical Sciences Industry Partnership Office, working with Singapore scientists and industry partners on translational and R&D projects cutting across multiple Singapore agencies.

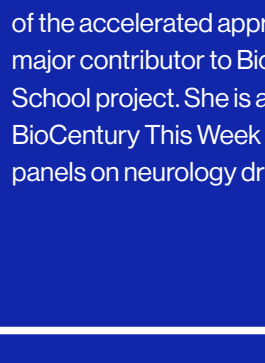
Moderated by:



KHOO SHIH
Chief Executive Officer
ClavystBio

Khoo Shih has been integral to establishing ClavystBio. As Managing Director of Life Sciences Investments at Temasek, she was part of the founding team that conceived and formed ClavystBio.

Prior to Temasek, Khoo Shih was with UOB Venture Management and was responsible for investing in life sciences venture and growth companies in China and USA. She started her business career in the Biomedical Sciences cluster at the Singapore Economic Development Board and was part of the team that spearheaded the growth of the biomedical industry in Singapore.



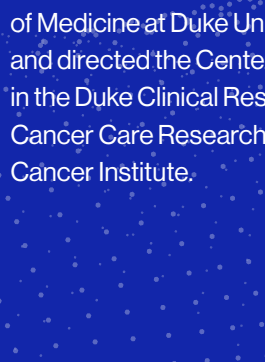
SELINA KOCH
Executive Editor & Head of Intelligence and Research, BioCentury Inc.

Selina directs BioCentury's in-depth analytical articles, research, and the generation of infographics, covering scientific, corporate and strategic content across the biomedical ecosystem. Selina has domain expertise across a wide range of topics relevant to drug developers, with particular expertise in neurology. She has written key coverage of Aduhelm, other Alzheimer's disease therapies and drug development more broadly in neurodegenerative diseases. She's also been a driver of coverage of the accelerated approval pathway, and is a major contributor to BioCentury's annual Back to School project. She is a guest contributor to the BioCentury This Week podcast, and moderates panels on neurology drug development globally.

Keynote Panel: Singapore as the Next Life Science Hub – Are we ready?

Innovations can come from anywhere but progressing them from bench to bedside takes an ecosystem. In this panel, we will explore how global collaborations can unlock the promise of innovations and the role Singapore can play.

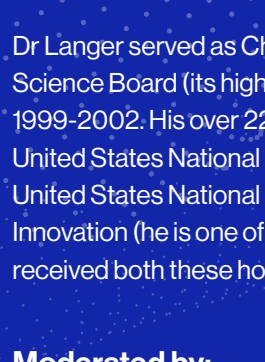
Panelists:



AMY ABERNETHY
President of Product Development and Chief Medical Officer, Verily

Dr Amy Abernethy leads teams at Verily in the development and delivery of products that bridge the gap between clinical research and care.

She was most recently Principal Deputy Commissioner of Food and Drugs of the US Food and Drug Administration (FDA) and the agency's acting Chief Information Officer. Prior to her role at the FDA, Dr Abernethy was Chief Medical Officer and Senior Vice President of Oncology of Flatiron Health. Before joining Flatiron, she was Professor of Medicine at Duke University School of Medicine and directed the Center for Learning Health Care in the Duke Clinical Research Institute and Duke Cancer Care Research Program in the Duke Cancer Institute.



ROBERT LANGER
Institute Professor, MIT

Dr Robert Langer is one of 9 Institute Professors at the Massachusetts Institute of Technology (MIT); being an Institute Professor is the highest honor that can be awarded to a faculty member. He has written over 1,500 articles, which have been cited over 401,000 times; his h-index of 315 is the highest of any engineer in history and the 2nd highest of any individual in any field. His patents have licensed or sublicensed to over 400 companies; he is a cofounder of a number of companies including Moderna.

Dr Langer served as Chairman of the FDA's Science Board (its highest advisory board) from 1999-2002. His over 220 awards include both the United States National Medal of Science and the United States National Medal of Technology and Innovation (he is one of 3 living individuals to have received both these honors).

Moderated by:

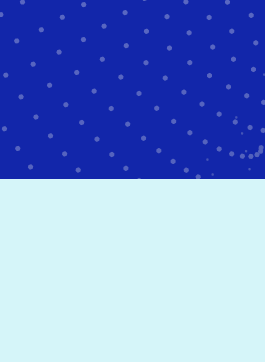


TERRY MCGUIRE
Founding Partner, Polaris Partners

Terry McGuire brings over 35 years of successful early stage investing experience in medical and information technology companies.

Prior to starting Polaris in 1996, Terry was a partner at Burr, Egan, Deleage & Co, investing in early stage medical and information technology companies. Terry began his career in venture capital at Golder, Thomas and Cressy in Chicago.

As a venture capitalist, Terry has invested in more than 80 companies. He also co-founded three companies: Inspire Pharmaceuticals (public and sold to Merck), AIR (sold to Alkermes), and MicroCHIPS (sold to Dare). These companies have raised over \$7 billion in equity and corporate capital. As a group, they have achieved a combined peak enterprise value of over \$70 billion.



FIDAH ALSAGOFF
Chairman, ClavystBio

Dr Fidah Alsagoff is Joint Head of the Enterprise Development Group (Singapore) and Head of Life Sciences at Temasek International.

He was previously a Partner at Innosight Ventures Pte Ltd and prior to that, was Chief Executive Officer of Ministry of Health Holdings. Fidah's career also includes nearly a decade in social entrepreneurship where he established several programmes and enterprises catering to unmet healthcare needs of patients. The latest among these was the Singapore Cord Blood Bank.

Dr Alsagoff currently serves on the Board of Trustees of the Singapore University of Technology and Design, and on the Governing Board of the Duke-NUS Medical School.

About

CLAVYSTBIO

ClavystBio's mission is to accelerate the commercialization of life sciences breakthroughs into health impact. We invest and partner with innovators, entrepreneurs and founders to launch and grow global companies in Singapore. We foster partnerships among academics, industry and investors, and convene life sciences communities at our collaborative innovation space Node 1. Together, we advance Singapore as a global life sciences translational hub.

ClavystBio was conceived by Temasek to be a venture builder, trusted partner, and keystone to catalyze global life solutions from Singapore. Since our inception in 2022, ClavystBio has committed over US\$220m in biotech, diagnostics, and digital health, and early-stage fund partners in Singapore.

www.clavystbio.com

Our Portfolio

We are excited for you to meet our portfolio companies at our event. Please let us know if you would like us to make introductions.



CLAVYSTBIO

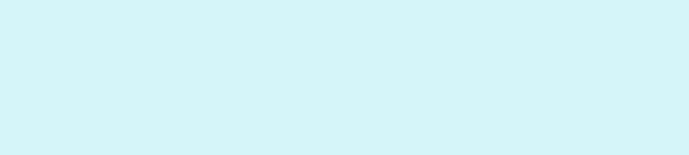
NODE 1

Our physical home in the heart of the Singapore Science Park provides critical infrastructure for ventures as co-working (lab and office) and collaboration spaces. Node 1 offers a plug-and-play space for such as that have graduated from incubators to progress to their next milestones.



Our lounge is a gathering space for life science communities

Our shared and private labs support early-stage company growth.



Curated community events provide opportunities for learning and networking across the ecosystem.